

**SCOTTISHPOWER
RENEWABLES**

East Anglia ONE North and East Anglia TWO Offshore Windfarms

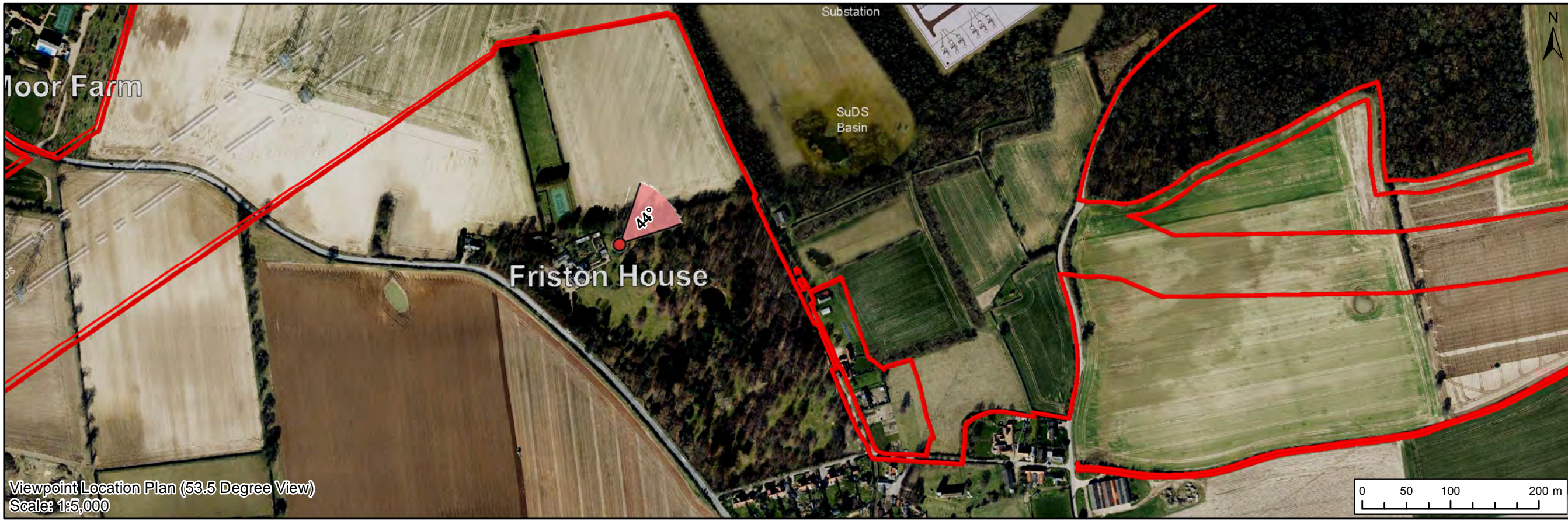
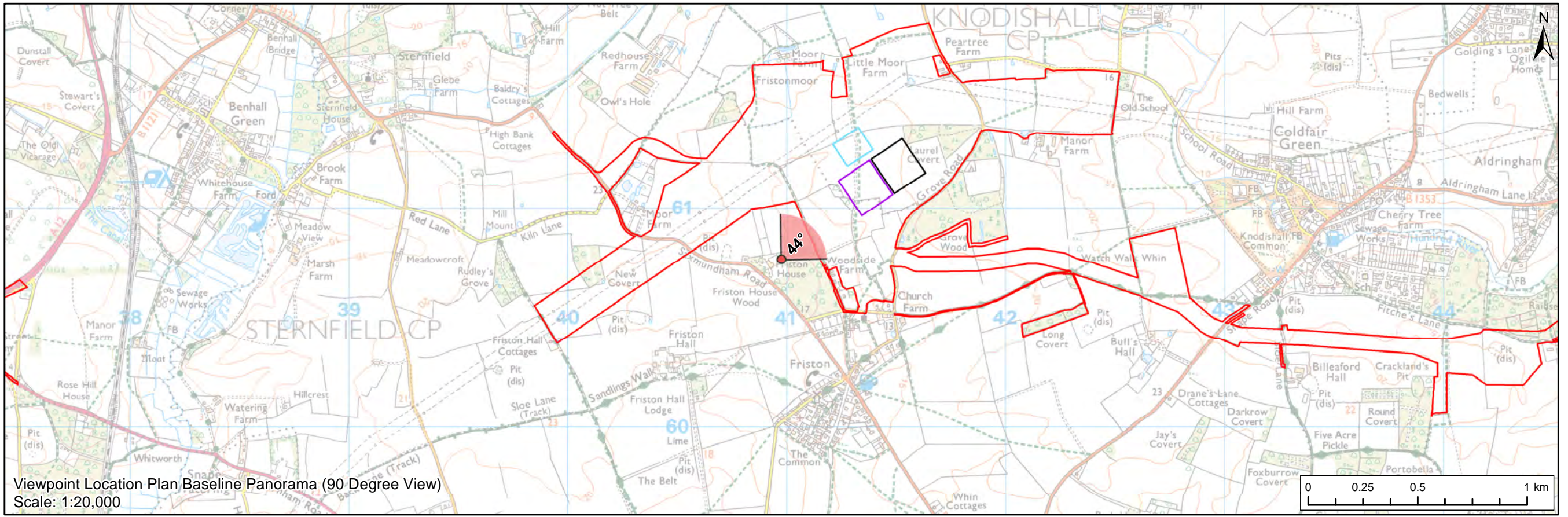
Heritage Assessment GIS Addendum

**Appendix 5 CHVP7 – Friston House (b)
(Appendix 24.7, Figure 12 Update)**

Applicants: East Anglia ONE North Limited and East Anglia TWO Limited
Document Reference: ExA.AS-30.D11.V1_05
SPR Reference: EA1N_EA2-DWF-ENV-REP-IBR-001074_05

Date: 7th June 2021
Revision: Version 1
Author: Royal HaskoningDHV

Applicable to **East Anglia ONE North and **East Anglia TWO****



Legend

- East Anglia ONE North and East Anglia TWO Onshore Development Area
- Western Substation (190m x 170m)
- Eastern Substation (190m x 170m)
- Indicative National Grid GIS Substation Location

Viewpoint:

- 90 Degree Field of View Viewpoint
- 63.5 Degree Field of View Viewpoint



Rev	Date	By	Comment	Approved:
2	07/06/2021	TH	Second Issue (OPEN)	Prepared: TH
1	13/01/2021	LA	First Issue (OPEN)	Checked: SM
				Approved: LT

Scale @ A3

Source: © Crown copyright and database right 2020. Ordnance Survey 100031972.
This map has been prepared to the best known information at the time of issue, and has been prepared for your information only. Please consult with the SPN Onshore GIS team to ensure the content is still correct before using the information contained on this map. No liability is accepted for any errors or omissions in the information contained in the map and shall not be liable for any loss, damage or expense caused by such errors or omissions.

East Anglia ONE North and East Anglia TWO		(Figure 12 - GIS Update)	
CHVP7: Friston House (b)	Rev	D11	Coordinate System: BNG
	Date	07/06/21	Datum: OSGB36
	Figure	12a	



Baseline Photograph (53.5 Degree Field of View)

View flat at a comfortable arm's length

OS reference: 641221 E 260618 N	Horizontal field of view: 53.5° (planar projection)	Camera: Canon EOS 5D Mark II	<small>Contains Ordnance Survey digital data © Crown copyright, All rights reserved 2020 Licence number 0100031673</small>
Eye level: 12 m AOD	Principal viewing distance: 812.5 mm	Lens: 50mm (Canon EF 50mm f/1.4)	
Direction of view: 16°	Paper size: 841 x 297 mm (half A1)	Camera height: 1.5 m AGL	Figure: 12b
	Correct printed image size: 820 x 260 mm	Date and time: 28/02/2020, 10:49:54	CHVP7: Friston House



Visual representation of 1st year of operational phase
 Photomontage of the proposed western substation and National Grid GIS substation

View flat at a comfortable arm's length

OS reference:	640975 E 260769 N	Horizontal field of view:	53.5° (planar projection)	Camera:	Canon EOS 5D Mark II
Eye level:	18 m AOD	Principal viewing distance:	812.5 mm	Lens:	50mm (Canon EF 50mm f/1.4)
Direction of view:	44°	Paper size:	841 x 297 mm (half A1)	Camera height:	1.5 m AGL
		Correct printed image size:	820 x 260 mm	Date and time:	07/03/2019, 15:57:53

Contains Ordnance Survey digital data © Crown copyright, All rights reserved 2019 Licence number 0100031673

Figure: 12c
CHVP7: Friston House (b)



Visual representation of 15th year of operational phase
 Photomontage of the proposed western substation and National Grid GIS substation

View flat at a comfortable arm's length

OS reference:	640975 E 260769 N	Horizontal field of view:	53.5° (planar projection)	Camera:	Canon EOS 5D Mark II
Eye level:	18 m AOD	Principal viewing distance:	812.5 mm	Lens:	50mm (Canon EF 50mm f/1.4)
Direction of view:	44°	Paper size:	841 x 297 mm (half A1)	Camera height:	1.5 m AGL
		Correct printed image size:	820 x 260 mm	Date and time:	07/03/2019, 15:57:53

Contains Ordnance Survey digital data © Crown copyright, All rights reserved 2019 Licence number 0100031673

Figure: 12d
CHVP7: Friston House (b)



Visual representation of 1st year of operational phase
 Photomontage of the proposed eastern substation and National Grid GIS substation

View flat at a comfortable arm's length

OS reference:	640975 E 260769 N	Horizontal field of view:	53.5° (planar projection)	Camera:	Canon EOS 5D Mark II
Eye level:	18 m AOD	Principal viewing distance:	812.5 mm	Lens:	50mm (Canon EF 50mm f/1.4)
Direction of view:	44°	Paper size:	841 x 297 mm (half A1)	Camera height:	1.5 m AGL
		Correct printed image size:	820 x 260 mm	Date and time:	07/03/2019, 15:57:53

Contains Ordnance Survey digital data © Crown copyright, All rights reserved 2019 Licence number 0100031673

Figure: 12e
CHVP7: Friston House (b)



Visual representation of 15th year of operational phase
Photomontage of the proposed eastern substation and National Grid GIS substation

View flat at a comfortable arm's length

OS reference:	640975 E 260769 N	Horizontal field of view:	53.5° (planar projection)	Camera:	Canon EOS 5D Mark II
Eye level:	18 m AOD	Principal viewing distance:	812.5 mm	Lens:	50mm (Canon EF 50mm f/1.4)
Direction of view:	44°	Paper size:	841 x 297 mm (half A1)	Camera height:	1.5 m AGL
		Correct printed image size:	820 x 260 mm	Date and time:	07/03/2019, 15:57:53

Contains Ordnance Survey digital data © Crown copyright, All rights reserved 2019 Licence number 0100031673

Figure: 12f
CHVP7: Friston House (b)



Visual representation of 1st year of operational phase
 Photomontage of the proposed western substation, eastern substation and National Grid GIS substation

View flat at a comfortable arm's length

OS reference:	640975 E 260769 N	Horizontal field of view:	53.5° (planar projection)	Camera:	Canon EOS 5D Mark II
Eye level:	18 m AOD	Principal viewing distance:	812.5 mm	Lens:	50mm (Canon EF 50mm f/1.4)
Direction of view:	44°	Paper size:	841 x 297 mm (half A1)	Camera height:	1.5 m AGL
		Correct printed image size:	820 x 260 mm	Date and time:	07/03/2019, 15:57:53

Contains Ordnance Survey digital data © Crown copyright, All rights reserved 2019 Licence number 0100031673

Figure: 12g
CHVP7: Friston House (b)



Visual representation of 15th year of operational phase
 Photomontage of the proposed western substation, eastern substation and National Grid GIS substation

View flat at a comfortable arm's length

OS reference:	640975 E 260769 N	Horizontal field of view:	53.5° (planar projection)	Camera:	Canon EOS 5D Mark II
Eye level:	18 m AOD	Principal viewing distance:	812.5 mm	Lens:	50mm (Canon EF 50mm f/1.4)
Direction of view:	44°	Paper size:	841 x 297 mm (half A1)	Camera height:	1.5 m AGL
		Correct printed image size:	820 x 260 mm	Date and time:	07/03/2019, 15:57:53

Contains Ordnance Survey digital data © Crown copyright, All rights reserved 2019 Licence number 0100031673

Figure: 12h
CHVP7: Friston House (b)